

The K Desktop Environment & KDE Kiosk



K Desktop Environment

Barry O'Donovan

Official Representative
For KDE in Ireland

<http://www.kde.ie/>
barry@kde.ie



K Desktop Environment

Overview

- What is KDE?
- KDE & Licensing
- KDE Packages and Applications
- Introduction to KDE Kiosk
- Some Simple Examples
- KDE Kiosk Admin Tool
- Contact Details & Sources of Information



K Desktop Environment

What is KDE?

- a contemporary desktop environment for UNIX
- network transparent
- an application development framework
- consistent look and feel – standard menus, toolbars, icons, keybindings, etc
- international



K Desktop Environment

KDE – Facts and Figures

- KDE is a big project
 - About 1,000 contributors help to develop KDE
 - About 300 translators
 - KDE has more than 106 official FTP mirrors in over 39 countries
- KDE 3.4 shipped in March'05 with:
 - more than 6,500 bugs fixed
 - more than 1,700 wishes fulfilled
 - more than 80,000 contributions with several million lines added or changed



K Desktop Environment

KDE & Licensing

- KDE is free to use, download, redistribute
- KDE is Open Source Software
 - Its source code can be read, redistributed and modified
- KDE core libraries are distributed under either LGPL, BSD or X11
- All other KDE source files may alternatively be under OSI approved licenses such as GPL, QPL, MIT



K Desktop Environment

KDE Packages

- Base – KDM, KDesktop, Konqueror, ...
- PIM – Kontact, KMail, KOrganiser
- Network – Kopete, KPPP, KGet, ...
- KDevelop – KDE's IDE
- KOffice – integrated office environment
- Multimedia, Graphics, Edutainment, Games, Utils, Webdev, Admin, ...



K Desktop Environment

Screenshots: KDE Desktop

The screenshot displays the Konqueror web browser window. The title bar reads "Conquer your Desktop! Courtesy of OSDir.com". The address bar is empty. The main content area features the KDE logo and the text "Konqueror Conquer your Desktop!". Below this, it states "Konqueror is your file manager, web browser and universal document viewer." and provides links for "Starting Points", "Introduction", "Tips", and "Specifications". A central panel lists several desktop locations with icons and descriptions:

- [Home Folder](#): Your personal files
- [Storage Media](#): Disks and removable media
- [Network Folders](#): Shared files and folders
- [Trash](#): Browse and restore the trash
- [Applications](#): Installed programs
- [Settings](#): Desktop configuration

A link at the bottom right of the panel says "Next: An Introduction to Konqueror". The status bar at the bottom of the window shows "Page loaded". The desktop taskbar at the bottom includes the KDE logo, a taskbar with icons for Konqueror, a file manager, and a terminal, and a system tray with a clock showing "00:56" and the date "2005-03-18".



K Desktop Environment

Screenshots: KMail

IMAP-Local/KDE/others - KMail

File Edit View Go Folder Message Tools Settings Help

Folder Total

- inbox 8
- sent-mail 641
- wastebin 589
- Access 16
- Book 1
- Cherrie 75
- Correspondance
- Drafts
- Family 21
- Google 39
- IHL
- ILUG
- KDE
 - delli8k 16
 - digests 1211
 - General 12
 - kde-core-de... 239
 - kde-cvs 843
 - kde-devel 273
 - kde.ie 125
 - kde-info 2
 - kde-linux 208
 - kde-pr 17
 - others (3) 320
 - Security 57
- LinuxGazette
- Lists 39

Search: Status: Any Status

Subject	Sender	Date (Order of Arrival)	Size
[dot] APPEAL Meeting: Springtime in Berlin	Dot Stories	Wed Apr 6 01:11:08 2005	4.4 KB
[Kde-kiosk] newbie- Library Computer runni...	BRIAN MOSES	Wed Apr 6 04:14:41 2005	3.6 KB
Re: [Kde-kiosk] newbie- Library Comput...	Martijn Klingens	Wed Apr 6 20:43:20 2005	3.2 KB
Re: [Kde-kiosk] newbie- Library Comp...	Waldo Bastian	Sun Apr 10 11:48:02 2005	7.2 KB
[Kde-kiosk] URL Restrictions (Re: ne...	Martijn Klingens	Sun Apr 10 13:43:26 2005	3.2 KB
Re: [Kde-kiosk] URL Restrictio...	Waldo Bastian	Sun Apr 10 14:58:01 2005	4.7 KB
Re: [Kde-kiosk] URL Restricti...	Martijn Klingens	Sun Apr 10 15:46:18 2005	3.3 KB
Trouble with kde-build	Leo Spalteholz	Wed Apr 6 05:13:29 2005	3.7 KB
Re: Trouble with kde-build	James Richard Tyrer	Wed Apr 6 09:03:22 2005	4.2 KB

Re: [Kde-kiosk] newbie- Library Computer running SuSE 9.2 Pro

From: Waldo Bastian <bastian@kde.org> (KDE)

To: kde-kiosk@kde.org

Date: Sun Apr 10 11:48:02 2005

Spam Status: Spamassassin

Message was signed by bastian@kde.org (Key ID: 0x378A6FAC435F6E82).
The signature is valid and the key is ultimately trusted.

On Wednesday 06 April 2005 05:14, BRIAN MOSES wrote:
> My local librarian is interested in Linux. The local
> library's were gifted computers from the "Gates"
> foundation last year but all the CD-rom's are locked.
> She would like to have a computer onsite that the

[17:02:54] Transmission for account IMAP-Local complete. No new messages.



K Desktop Environment

Screenshots: Kontact

The screenshot shows the 'Calendar - Kontact' application window. The interface includes a menu bar (File, Edit, View, Go, Actions, Schedule, Settings, Help), a toolbar with navigation icons, and a sidebar with various modules: Summary, Mail, Contacts, Calendar (highlighted with a '3' badge), To-do List, Journal, Notes, Feeds, and Synchronization.

The main area is divided into three sections:

- Monthly Calendar:** Displays a calendar for March 2005. The days of the week are Mon, Tue, Wed, Thu, Fri, Sat, Sun. The dates 14 through 20 are highlighted in blue, indicating the current week.
- Event Preview:** Shows 'No incidence selected'. Below this, a note states: 'If you select an event or todo in KOrganizer's main view, you will see a preview of that item here.'
- Calendar Resource List:** A list titled 'Calendar' containing one entry: Default KOrganizer resource.

At the bottom of the main area, there are three buttons: 'Add...', 'Edit...', and 'Remove'.

On the right side, there are two detailed views for the selected date, Friday, March 18th:

- All Day View:** A large empty rectangular area representing all-day events.
- Hourly View:** A grid showing time slots from 7:00 to 15:00. The area from 8:00 to 15:00 is shaded light blue, indicating a selected event or resource.



K Desktop Environment

Screenshots: Kopete





K Desktop Environment

Screenshots: Firefox

Welcome to KDE.ie - The Home of KDE in Ireland - Mozilla Firefox

File Edit View Go Bookmarks Tools Help

http://www.kde.ie/

Dag Apt Repository Google Firebird Project Red Hat

the  Desktop Environment  <http://www.k3b.org/> CD & DVD burning made easy 

KDE.ie

- What is KDE?
- Contact
- Contributors
- Commercial
- Case Studies
- Web links
- In the Press
- About KDE.ie
- Official KDE Homepage

KDE Languages

- British English
- Irish Gaelic

KDE.ie Campaigns

- Software Patents

App of the Month

Done

KDE.ie - The Home of KDE in Ireland

KDE is a powerful graphical desktop environment for Linux and Unix workstations. It is '[Free Software](#)' that combines ease of use, contemporary functionality, and outstanding graphical design with the technological superiority of the Unix operating system. [More...](#)

The mission of **KDE.ie** is to promote the K Desktop Environment throughout the island of Ireland and to showcase the various activities of Irish KDE developers and contributors.

Latest News

31 March 2005: [Announcing KDE 3.4 and KDE.ie](#) – The KDE Project has shipped a new major release of their leading Open Source desktop environment. We would like to formally announce this new release. KDE is

In the hot seat:



Free Patents

KDE.ie is against software patents
www.kde.ie/patents/

Latest KDE News

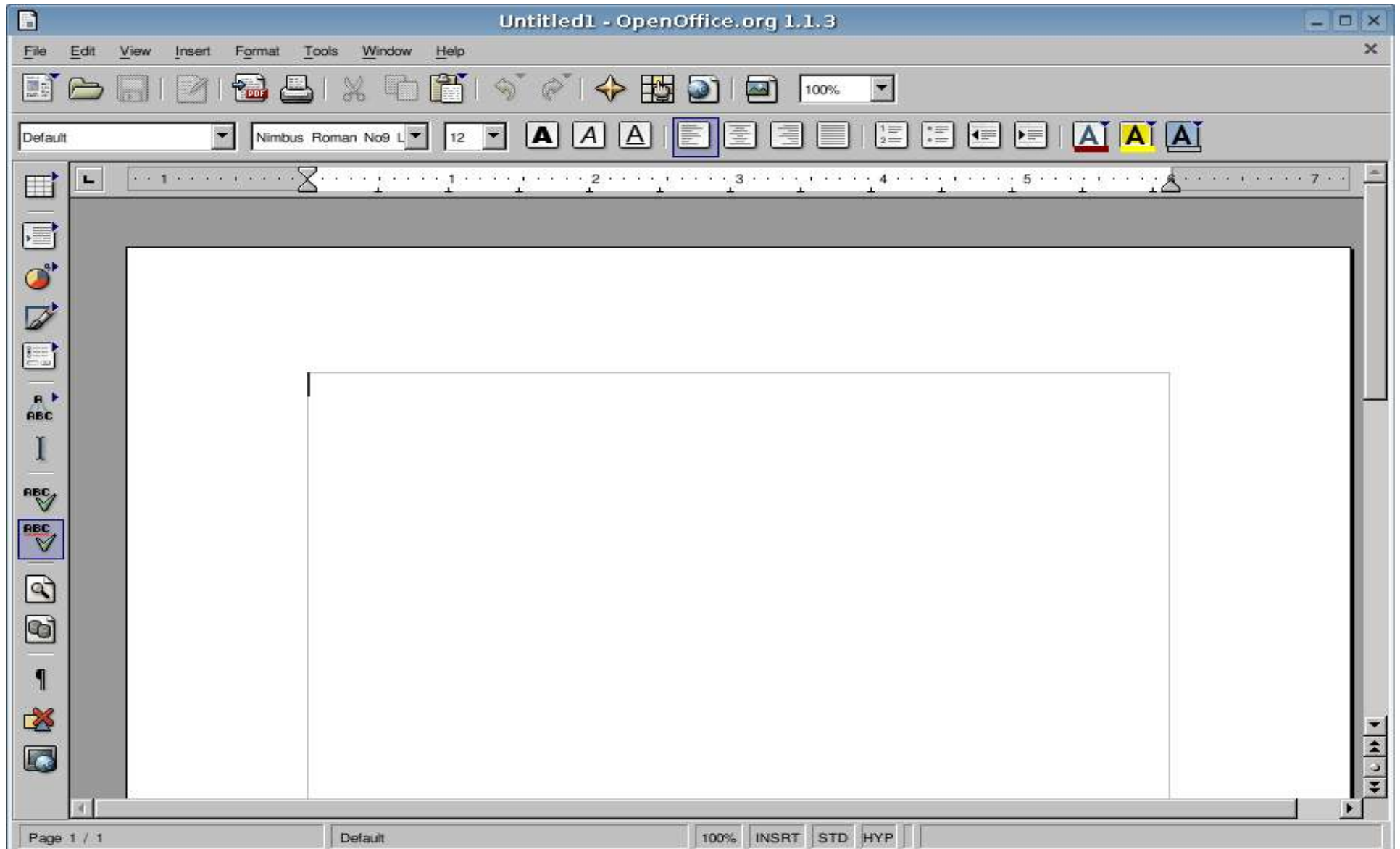
(from dot.kde.org)

- ♦ [No KDE CVS-Digest for April 8, 2005](#)



K Desktop Environment

Screenshots: OpenOffice.org Writer





K Desktop Environment

KDE Kiosk

- KDE Kiosk is a framework built in to KDE since KDE3
- Allows administrators to create a controlled desktop environment for all users
 - Create default configuration options
 - And lock them
 - Restrict “KDE Actions”, URLs, KControl modules, resources



K Desktop Environment

KDE Kiosk

- KDE Kiosk can be used wherever a restricted desktop environment is required or desired
 - Internet cafés, public access terminals, libraries
 - School/college laboratories
 - Deployments in the enterprise environment
 - ensure a terminal is only used for intended purpose
 - enforce sensible defaults, branding, auto-locking
 - administrators can change settings on hundreds or even thousands of desktops from his/her office
 - implement and enforce security policies



K Desktop Environment

KDE Kiosk

- KDE applications use KDE's configuration API to create/access/alter their configuration files
- Configuration files grouped into key=value pairs:

```
[FMSettings]
```

```
HomeURL=http://www.kde.ie/
```

```
ShowPreviewsInFileTips=true
```



K Desktop Environment

KDE Kiosk

- Multiple configuration files per application
- KDE uses a “cascading configuration”
 - system directories read first – defaults
 - user directory read last – customisation
- Most recently read configuration options override previously read options
- key=value pairs, groupings or entire config files can be marked as “immutable”
 - basis of KDE Kiosk framework



K Desktop Environment

KDE Kiosk – Application Configurations

- Lock corporate homepage (konquerorrc) :
[FMSettings]
HomeURL[\$i]=http://www.company.com/
- Lock company desktop image (kdesktoprc)
[Background Common]
CommonDesktop[\$i]=true
[Desktop0][\$i]
Wallpaper=/usr/share/company.png
WallpaperMode=Scaled



K Desktop Environment

KDE Kiosk - Actions

- KStdActions – consistency across applications
 - Described by some text, an icon, accelerator keys, a “slot”
- Over 120 standard actions in KDE3.4
 - Files: open, save, save as, open recent, etc
 - Edit: cut, copy, paste, find, replace, spelling, etc
 - Printing, View, Location/Position
 - Security: shell access, Run Command access
 - Misc: mail, help, about, preferences, quit, etc



K Desktop Environment

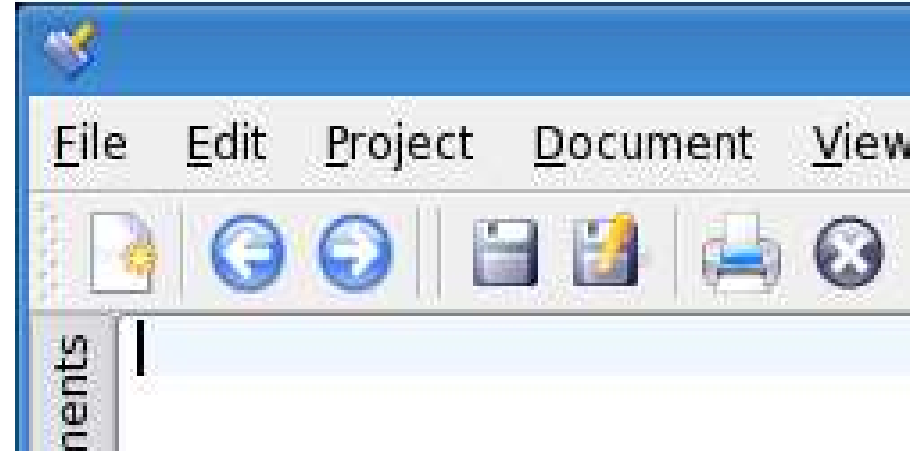
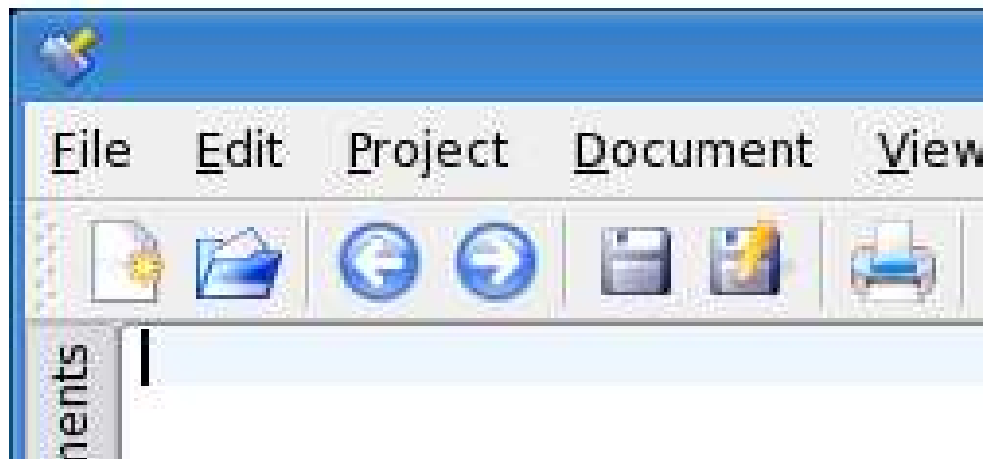
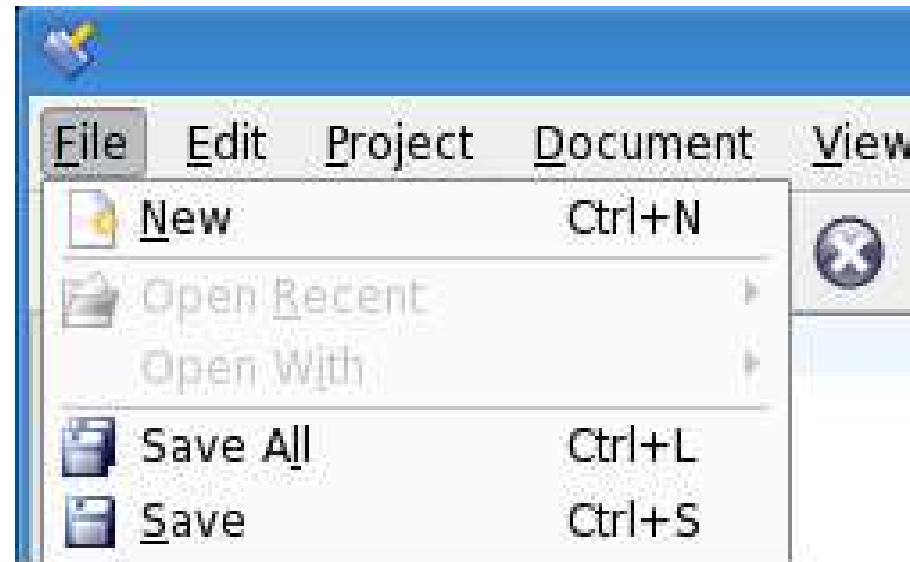
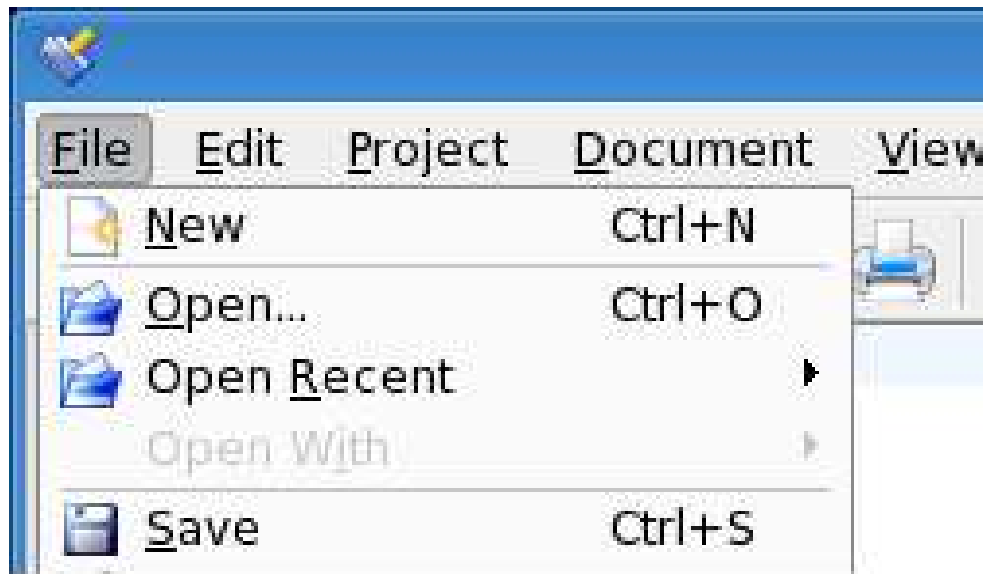
KDE Kiosk: Actions

- In `$KDEDIRS/share/config/kdeglobals`
`[KDE Action Restrictions][$i]`
`action/file_open=false`
`action/edit_cut=false`
`user/root=false`
`shell_access=false`
`logout=false`
`lock_screen=false`
`lineEdit_text_completion=false`
`print/system=false`



K Desktop Environment

KDE Kiosk: Actions





K Desktop Environment

KDE Kiosk – Restricting URLs

- KDE is network transparent
 - **All** files are represented by URLs
- KDE Kiosk allows sys admins to restrict access to URLs by
 - action: list, open
 - protocol: http, file, sftp, etc
 - referrer
 - host
 - path



K Desktop Environment

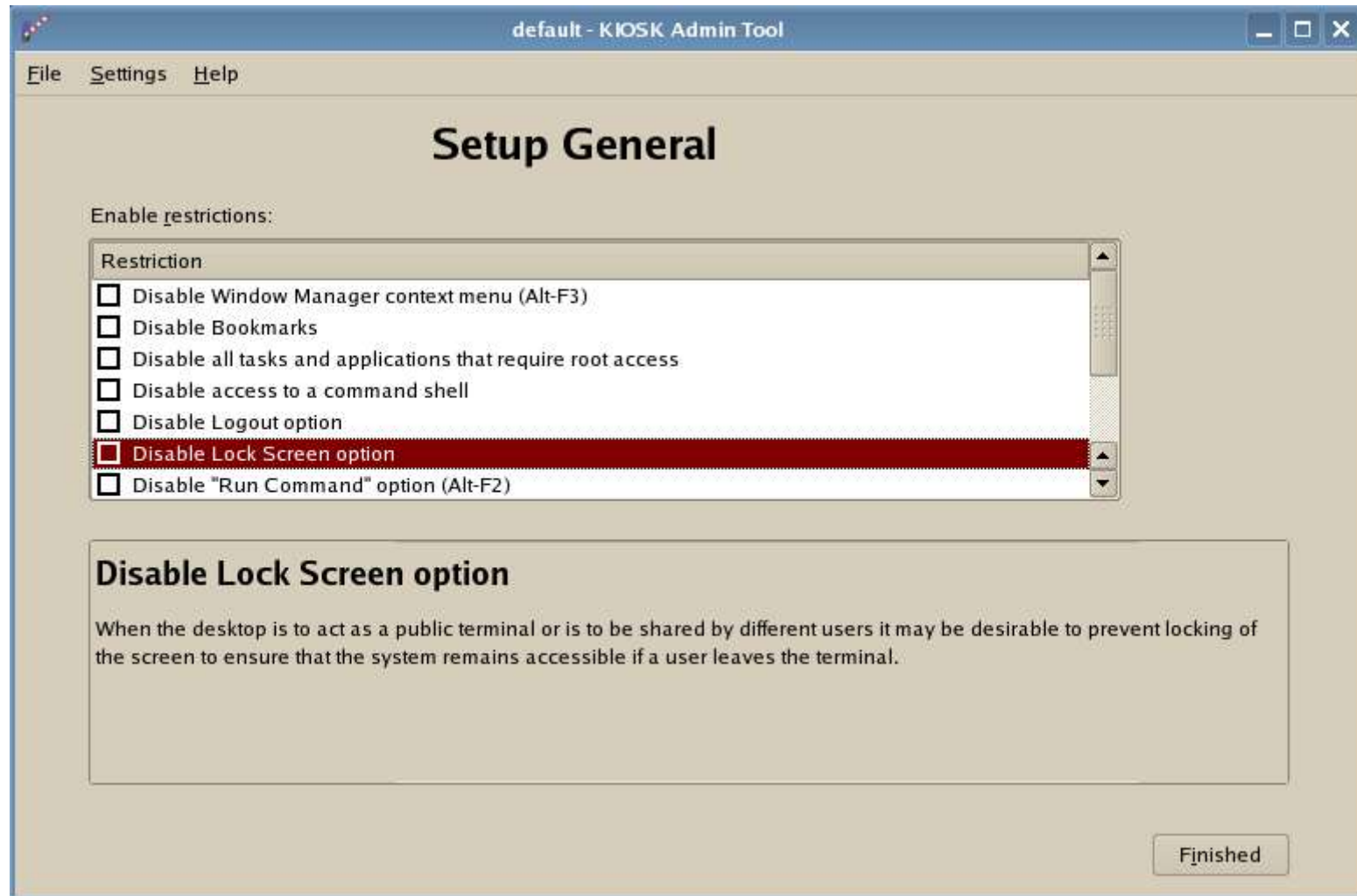
KDE Kiosk: Kiosk Admin Tool

- Not everyone likes editing configuration files by hand
- Developed for KDE by Novell for their Linux Desktop
- Can create multiple KDE profiles and assign them by Unix user or group
- Allows local modification and then upload to a centralised server or individual desktops



K Desktop Environment

KDE Kiosk: Kiosk Admin Tool





K Desktop Environment

More Information

- KDE.ie - <http://www.kde.ie/>
 - The home of KDE in Ireland
 - Listing of companies offering KDE products and services
 - Mailing list
- KDE::Enterprise - <http://enterprise.kde.org/>
- Official KDE Homepage: <http://www.kde.org/>